

MV-CA060-11GM

6 MP 1/1.8" CMOS GigE Area Scan Camera



GEN*i*CAM

GIG*E* VISION

Introduction

MV-CA060-11GM camera adopts Sony IMX178 sensor to provide high-quality image. It uses GigE interface to transmit non-compressed images in real time with max. frame rate reaching 17 fps.

Key Feature

- Adopts GigE interface and max. transmission distance of 100 meters without relay
- Up to 128 MB local memory for burst transmission and retransmission
- Supports auto exposure control, LUT, Gamma correction, etc.
- Supports hardware trigger, software trigger, etc.
- Compatible with GigE Vision Protocol V2.0, GenICam Standard, and third-party software based on these protocol and standard

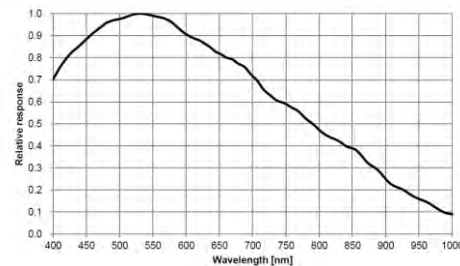
Available Model

Mono camera: MV-CA060-11GM

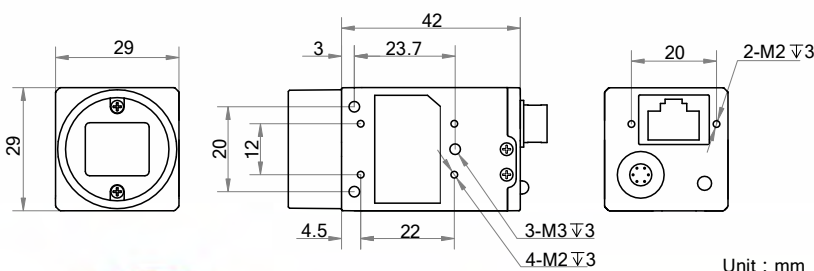
Applicable Industry

Electronic semiconductor, factory automation, logistic code reading, medical packaging, etc.

Sensor Quantum Efficiency



Dimension



Specification

Model	MV-CA060-11GM
Camera	
Sensor type	CMOS, rolling shutter
Sensor model	Sony IMX178
Pixel size	2.4 μm x 2.4 μm
Sensor size	1/1.8"
Resolution	3072 x 2048
Max. frame rate	17 fps @3072 x 2048
Dynamic range	71.3 dB
SNR	41.3 dB
Gain	0 dB to 20 dB
Exposure time	27 μs to 2.5 s
Shutter mode	Off/Once/Continuous exposure mode, supports Global Reset
Mono/color	Mono
Pixel format	Mono 8/10/10p/12/12p
Binning	Supports 2 x 2
Decimation	Not support
Reverse image	Supports horizontal and vertical reverse image output
Image buffer	128 MB
Electrical features	
Data interface	Gigabit Ethernet
Digital I/O	6-pin Hirose connector provides power and I/O, including opto-isolated input x 1 (Line0), opto-isolated output x 1(Line1), bi-directional non-isolated I/O x 1 (Line2)
Power supply	5 VDC to 15 VDC, supports PoE power supply
Power consumption	Approx. 2.5 W@12 VDC
Structure	
Lens mount	C-Mount
Dimension	29 mm x 29 mm x 42 mm (1.1" x 1.1" x 1.7")
Weight	Approx. 68 g (0.15 lb.)
Ingress protection	IP30 (under proper lens installation and wiring)
Temperature	Working temperature: 0 °C to 50 °C (32 °F to 122 °F) Storage temperature: -30 °C to 70 °C (-22 °F to 158 °F)
Humidity	20% to 80% RH, without condensation
General	
Client software	MVS or third-party software meeting with GigE Vision Protocol
Operation system	32/64-bit Windows XP/7/10 and 32/64-bit Linux
Compatibility	GigE Vision V2.0, GenICam
Certifications	CE, FCC, RoHS, KC

HIKROBOT

Hangzhou Hikrobot Technology Co., Ltd.
No.399 Danfeng Road, Binjiang District, Hangzhou 310051, China.
en.hikrobotics.com

MaxxVision®

Sigmaringer Str. 121
70567 Stuttgart
Tel.: 0711 997 996 3
www.maxxvision.com

Copyright Hikrobot

Hangzhou Hikrobot Technology Co., Ltd. All Rights Reserved. Hangzhou Hikrobot Technology does not tolerate any infringement. Any organization or individual may not imitate or reproduce in whole or in part of the content. The data herein is based on Hikrobot's internal evaluation. Actual data may vary depending on specific configuration and operating condition. The information herein is subject to change without notice. All the content has been checked conscientiously. Nevertheless, Hikrobot shall not be liable to damages resulting from errors, inconsistencies or omissions.