

# DS-2TD2138-15/QY(B)

Hikvision IP Thermal Camera PRO

Range

Thermal sensor 384x288 VOx | Lens

15 mm

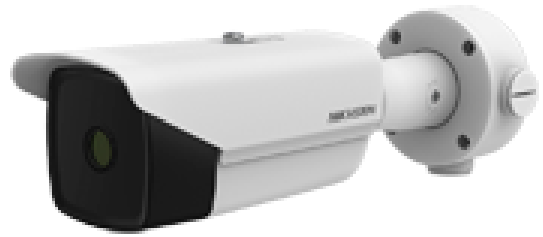
Thermal sensitivity ? 35 mK

Preventive fire detection and alarm

Temperature measurement range -

20~150°C / ± 8°C

IP67 | IK10 | Anti-corrosion



Hikvision

PRO Range

Anti-corrosion Thermal Bullet IP Camera

Thermal sensor 384x288 Vox

15 mm Lens

Temperature measurement range -20°C~150°C (±8°C)

Thermal sensitivity < 35 mK

3D-DNR

H.265 / H.264

RJ-45 10/100 BaseT

RS-485 half duplex

PoE IEEE802.3af

Alarms

Audio

Preventive fire detection and alarm

MicroSD card slot up to 256 GB

WEB, CMS, Smartphone and NVR interface

ONVIF Compatible

Weatherproof IP67

Vandal proof IK10

Surge protection

Suitable for environments with anti-corrosion requirements

# Specifications

Brand	Hikvision
Range	PRO
Thermal sensor	Vanadium Oxide
Thermal sensor resolution	384x288
Main Stream rate	25 fps (1280x720, 704x576, 640x512, 352x288) [%VAR%] [%VAR%]
Extra Stream rate	25 fps (704x576, 640x512, 352x288)
Third stream rate	25 fps (1280x720, 704x576, 640x512, 352x288)
Compression	H.265 / H.264 / MJPEG
Lens	15 mm
DRI	Human: 625 m (D), 156 m (R), 78 m (I) Vehicle: 1917 m (D), 479 m (R), 240 m (I) Human: 150 m Vehicle: 450 m
VCA ranges	Temperature Measurement (Object 0.2x0.2m): 50 m Temperature Measurement (Object 1x1m): 250 m Fire detection (Object 0.2x0.2m): 180 m
Viewing angle	Thermal: 17° (H), 13° (V)
Thermal sensitivity	< 35 mK
Thermal measurement range	-20 ~150 °C / ± 8 °C
Spectral range	8~14 ?m
Pitch detector	12 ?m
VCA	Up to 8 VCA rules (cross line, intrusion, area entry and exit)
Temperature rules	Even 21 rules (10 points, 10 areas and 1 line)
Audio	1 input / 1 line level output 600 ohm
Audio Compression	G.722.1/G.711 ulaw/G.711 alaw/MP2L2/G.726/PCM
Alarms	2 inputs / 2 relay
Internal memory	MicroSD card slot up to 256 GB
Network interface	Ethernet 10/100 BaseT
Communication	1 x RS-485 half-duplex
Remote access	Web Browser, Hik-Connect Smartphone App, PC Software iVMS-4200 and Hik-Central
Interoperability	ONVIF, ISAPI
Power	AC 24 V, 130~220 mA, 5 W max. DC 12 V, 370~610 mA, 5 W max. PoE IEEE802.3af
Temp. operation	-40° C ~ +65° C
Degree of protection	Waterproof IP67, vandal-resistant IK10, Surge protection 6000 V, Anti-corrosion
Dimensions	115.2 mm (H) x 113.5 mm (W) x 351.3 (D) mm
Weight	1770 g