

AUTOMATIC TRANSFER SWITCH CAPABLE OF MONITORING

Dual power inputs to ensure continuous power for connected equipment, with monitoring capability

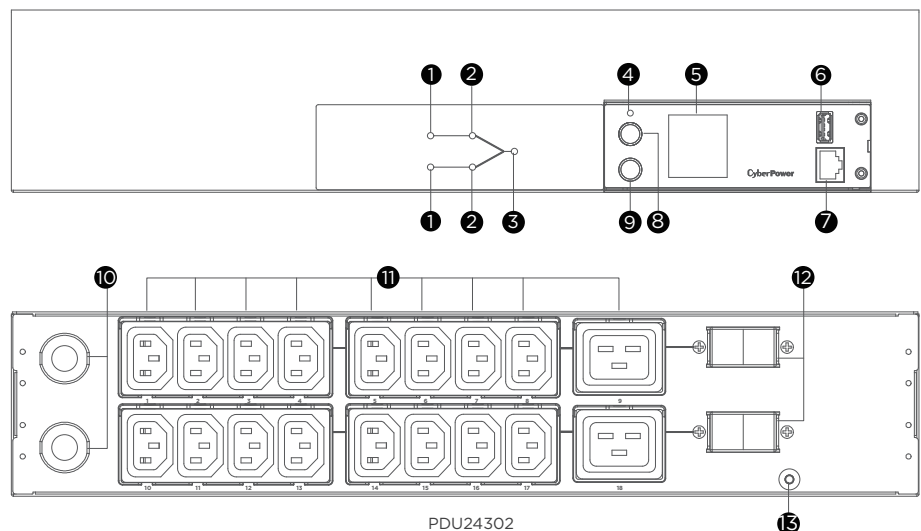
Ideal for server room and IT applications, the Metered ATS Series is a power distribution device that delivers electricity from a single source to multiple devices. The dual input design provides power redundancy, and users can select their preferred input power source. When the primary power source is unstable or fails, the products will seamlessly switch over to the secondary power source within 10 ms (Source Failure Detection Time: 2-3 ms. Power Source Transfer Time: 2-7 ms) to ensure power continuity. The multifunction LCD readout is color-changeable and allows real-time monitoring. The products can be connected to a PC via the serial port to control the ATS PDUs locally. The USB port also supports easy firmware upgrade.

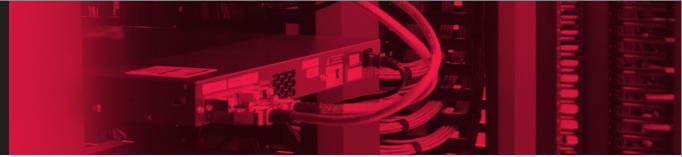
SERIES FEATURES

- Real-time Local Monitoring
- Dual Inputs
- Quick Transfer Time (Total < 10 ms)
- Industrial-grade Metal Housing
- Digital Real-time Load Display
- User Configurable Color LCD
- Hot-swappable LCD Design
- LED Status Indicator
- Firmware Upgrade via USB
- User-upgradeable Firmware
- Adjustable Mounting Brackets
- Cord Retention Tray
- IEC Receptacle Locking

PRODUCT CALLOUTS

1. Source Indicator
2. Source Selected Indicator
3. Output Indicator
4. Status Indicator
5. LCD Display Panel
6. USB Port
7. Serial Port
8. Select Button
9. Enter Button
10. AC Power Cord
11. AC Outlets
12. Circuit Breaker
13. Ground Stud





TECHNICAL SPECIFICATIONS

Model Name	PDU24302
Input	
Nominal Input Voltage (Vac)	200 - 240
Input Frequency (Hz)	50 / 60
Maximum Input Current (A)	32
Input Connector Type	IEC 60309 32A x 2
Power Cord Length (m.)	3.05
Output	
Over Current Protection (Each Bank) (A)	20
Outlets - # of Bank(s) (Bank)	2
Outlet(s) - Total	18
Outlet(s) - Rear	18
Outlet Type	IEC C19 x 2, IEC C13 x 16
Management & Communications	
LCD Information Display	Input Voltage (Volts), Input Frequency (Hz), Current Level (Amps), Power Consumption (Kilowatts), Serial Number, Hardware Version, Firmware Version
LED Indicators	PDU Status, Source Status, Load
A-type USB Port	Yes
Connectivity Port	RJ45 (for Serial)
Environmental Sensor Supported	No
Physical	
Installed Rack Height (U)	2
Cord Retention Tray	Yes
IEC Receptacle Locking	Yes
Physical Size	
Dimensions (WxHxD) (mm.)	433 x 88 x 215
Weight (kg.)	7.4
Environmental	
Operating Temperature (°C)	0 - 45
Operating Relative Humidity (Non-condensing) (%)	0 - 95
Certifications	
Certifications*	CE, FCC Class A, UL62368, EN 55032 Class A, IEC 62368
RoHS	Yes

*Certifications may vary according to different regions. Visit www.cyberpower.com for more information.
 #All specifications are subject to change without notice.