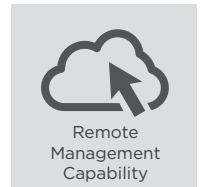
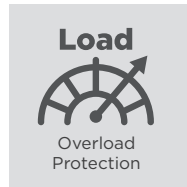
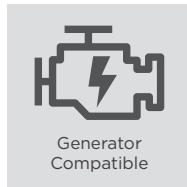
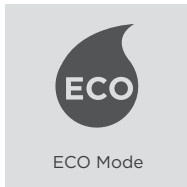
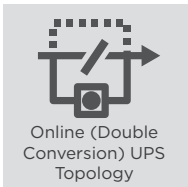


OLS1000E/OLS1500E
OLS2000E/OLS3000E



TRUSTWORTHY ONLINE UPS TO PROTECT IT EQUIPMENT



The high-quality online double-conversion UPS that offers the ideal power protection

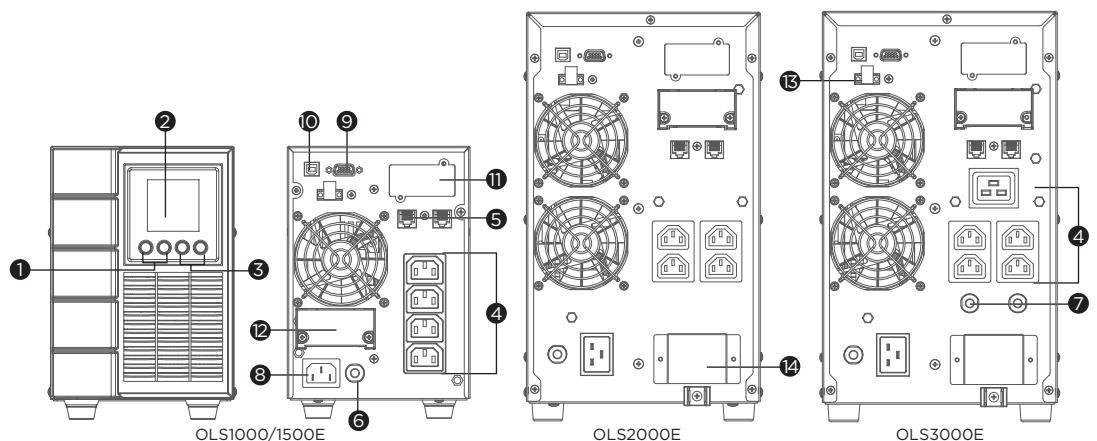
Designed for office and data center applications, the Online S (Premium) Series adopts double-conversion topology to provide seamless Pure Sine Wave output. The UPSs are compatible with generators to prolong power continuity. The products also adopt ECO Mode to help save on energy costs, Smart Battery Management (SBM) to extend battery lifespan, and multifunction LCD readout to display precise information. The power management software allows users to easily control and monitor the UPS system.

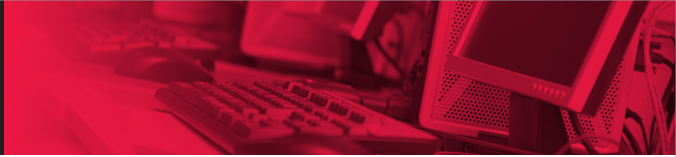
SERIES FEATURES

- Online (Double Conversion) UPS Topology
- ECO Mode
- Generator Compatible
- Overload Protection
- Zero Transfer Time
- Smart Battery Management (SBM)
- Extended Battery Module (EBM)
- Surge and Spike Protection
- EMI and RFI Filtration
- Phone/Fax/Modem/DSL/Network Protection
- LCD Status Display
- Emergency Power Off (EPO) Port
- PowerPanel Management Software
- SNMP/HTTP Remote Management Capability (Optional)

PRODUCT CALLOUTS

1. Power On/Off Switch
2. LCD Display Panel
3. Function Button(s)
4. Battery Backup & Surge Protected Outlets
5. Communication Protection Ports RJ11/RJ45
6. Input Circuit Breaker
7. Output Circuit Breaker
8. AC Inlet
9. Serial Port
10. USB Port
11. SNMP/HTTP Network Slot
12. Extended Battery Module Connector
13. EPO Port
14. Output Terminal Block





TECHNICAL SPECIFICATIONS

Model Name	OLS1000E	OLS1500E	OLS2000E	OLS3000E
General				
UPS Topology	Online Double Conversion			
Energy Saving Technology	Online ECO Mode Efficiency > 95%			
Active PFC Compatibility	Yes			
Input				
Generator Compatibility	Yes			
Nominal Input Voltage (Vac)	230 ± 10%			
Input Voltage Range (Vac)	160 - 300		190 - 300	
Input Frequency (Hz)	50 ± 10, 60 ± 10			
Input Frequency Detection	Auto-sensing			
Rated Input Current (A)	4.5	6.5	9	13.04
Input Power Factor	0.98			
Input Connector Type	IEC C14		IEC C20	
Output				
Capacity (VA)	1000	1500	2000	3000
Capacity (Watts)	900	1350	1800	2700
On Battery Waveform	Pure Sine Wave			
On Battery Voltage(s) (Vac)	208 ± 1%, 220 ± 1%, 230 ± 1%, 240 ± 1%			
Output Voltage Setting	Configurable			
On Battery Frequency (Hz)	50 ± 0.5%, 60 ± 0.5%			
Output Frequency Setting	Configurable			
Power Factor	0.9			
Overload Protection	Internal Current Limiting, Circuit Breaker, Fuse			
Overload Protection (Line Mode)	110-120% Load for 1 min, >120% Load Immediately			
Overload Protection (Battery Mode)	110-120% Load for 10 sec, >120% Load Immediately			
Overload Protection (Bypass Mode)	>130% Load Immediately			
Harmonic Distortion (Linear Load)	THD < 3%			
Harmonic Distortion (Non-linear Load)	THD < 5%			
Outlet(s) - Total	4		6	
Outlet Type	IEC C13 x 4		Hardwire Terminal Block x 1, IEC C13 x 4	IEC C19 x 1, Hardwire Terminal Block x 1, IEC C13 x 4
Outlet(s) - Battery & Surge Protected	4		5	
Typical Transfer Time (ms)	0			
Battery				
Runtime at Half Load (min)	15	14	15	14
Runtime at Full Load (min)	5	4	5	4
Typical Recharge Time (Hours)	5			
Smart Battery Management (SBM)	Yes			
User-replaceable	No			
Battery Type	Sealed Lead-acid			
Compatible Extended Battery Module (EBM)	BPSE36V45A		BPSE72V45A	
Max. EBM Quantity (pcs)	3			
Surge Protection & Filtering				
Surge Suppression (Joules)	440			
EMI/RFI Filtration	Yes			
Phone/Network Protection RJ11/RJ45 (Combo)	1-in, 1-out			
Management & Communications				
LCD Panel	Yes			
HID Compliant USB Port(s)	1			
Serial Port	RS232			
Emergency Power Off (EPO) Port	Yes			
Power Management Software	PowerPanel Business (Recommended)			
SNMP/HTTP Remote Monitoring	Yes - with optional RMCARD205			
Physical				
Form Factor	Tower			
Physical Size - UPS Module				
Dimensions (WxHxD) (mm.)	151 x 225 x 394		196 x 337 x 416	
Weight (kg.)	13.1	15.3	23.8	28.2
Environmental				
Operating Temperature (°C)	0 - 40			
Operating Relative Humidity (Non-condensing) (%)	20 - 90			
Online Thermal Dissipation (BTU/hr)	342	420	666	1126
Certifications				
Certifications*	CE, EAC, LOA			
RoHS	Yes			

*Certifications may vary according to different regions. Visit www.cyberpower.com for more information.
#All specifications are subject to change without notice.