

MV-CA005-20GM/GC

0.5 MP 1/3.6" CMOS GigE Area Scan Camera



GEN*i*CAM

GIG*E* VISION

Introduction

MV-CA005-20GM/GC adopts PYTHON480 sensor to provide high quality image. The GigE interface provides high-speed real-time transmission of uncompressed data with the maximum frame rate reaching 116 fps at full resolution.

Key Feature

- Adopts GigE interface and max. transmission distance of 100 meters without relay
- Supports hardware triggering and software triggering
- Supports auto and manual adjustment for exposure control, LUT, Gamma correction, etc.
- Up to 128 MB local memory for burst transmission and retransmission
- Compatible with GigE Vision Protocol V1.2 and third-party software meeting with GigE Vision Protocol

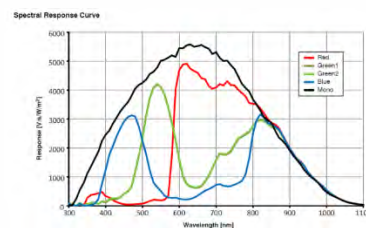
Available Model

Mono camera: MV-CA005-20GM
Color camera: MV-CA005-20GC

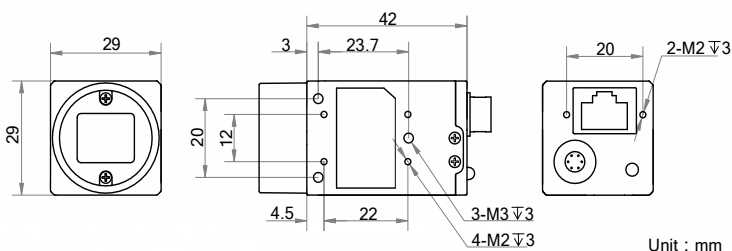
Applicable Industry

Electronic semiconductor, factory automation, quality inspection, etc.

Sensor Quantum Efficiency



Dimension



Specification

Model	MV-CA005-20GM	MV-CA005-20GC
Camera		
Sensor type	CMOS, global shutter	
Sensor model	PYTHON480	
Pixel size	4.8 μm x 4.8 μm	
Sensor size	1/3.6"	
Resolution	808 × 608	
Max. frame rate	116 fps @808 × 608	
Dynamic range	59 dB	
SNR	39 dB	
Gain	0 dB to 10 dB	
Exposure time	42 μs to 10 s	
Shutter mode	Off/Once/Continuous exposure mode	
Mono/color	Mono	Color
Pixel format	Mono 8/10/10p/12/12p	Mono 8/10/12, Bayer RG 8/10/10p/12/12p, YUV 422 Packed, YUV422_YUYV_Packed, RGB8
Reverse image	Supports horizontal and vertical reverse image output	
Image buffer	128 MB	
Electrical features		
Data interface	Gigabit Ethernet	
Digital I/O	Opto-isolated input x 1, Opto-isolated output x 1, Bi-directional non-isolated I/O x 1	
Power supply	5 VDC to 15 VDC, supports PoE power supply	
Power consumption	Approx. 3.0 W@12 VDC	
Structure		
Lens mount	C-Mount	
Dimension	29 mm × 29 mm × 42 mm (1.1" × 1.1" × 1.7")	
Weight	Approx. 68 g (0.15 lb.)	
Ingress protection	IP30 (under proper lens installation and wiring)	
Temperature	Working temperature: 0 °C to 50 °C (32 °F to 122 °F) Storage temperature: -30 °C to 70 °C (-22 °F to 158 °F)	
Humidity	20% to 80% RH, without condensation	
General		
Client software	MVS or third-party software meeting with GigE Vision Protocol	
Operation system	32/64-bit Windows XP/7/10, 32/64-bit Linux and 64-bit MacOS	
Compatibility	GigE Vision	
Certifications	CE, FCC, RoHS, KC	

HIKROBOT

Hangzhou Hikrobot Technology Co., Ltd.
No.399 Danfeng Road, Binjiang District, Hangzhou 310051, China.
en.hikrobotics.com

MaxxVision®

Sigmaringer Str. 121
70567 Stuttgart
Tel.: 0711 997 996 3
www.maxxvision.com

Copyright Hikrobot

Hangzhou Hikrobot Technology Co., Ltd. All Rights Reserved. Hangzhou Hikrobot Technology does not tolerate any infringement. Any organization or individual may not imitate or reproduce in whole or in part of the content. The data herein is based on Hikrobot's internal evaluation. Actual data may vary depending on specific configuration and operating condition. The information herein is subject to change without notice. All the content has been checked conscientiously. Nevertheless, Hikrobot shall not be liable to damages resulting from errors, inconsistencies or omissions.