

# MV-CA013-21UM/UC

1.3 MP 1/2" CMOS USB3.0 Area Scan Camera



GEN<i>i</i>CAM

USB<sup>TM</sup>  
VISION

## Introduction

MV-CA013-21UM/UC camera adopts PYTHON1300 sensor to provide high-quality image. It uses USB3.0 interface to transmit non-compressed images in real time, and its max. frame rate can reach 210 fps in full resolution.

## Key Feature

- Supports auto and manual adjustment for gain, exposure control, LUT, Gamma correction, etc.
- Supports hardware triggering, software triggering and free run mode.
- Adopts M2 screw holes for securing cable that connects USB3.0 interface.
- Compatible with USB3 Vision Protocol, GenICam Standard, and the third-party software based on these protocol and standard.

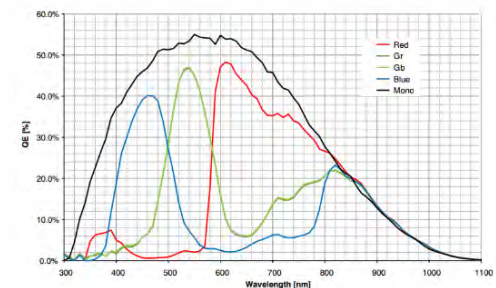
## Available Model

- Mono camera: MV-CA013-21UM
- Color camera: MV-CA013-21UC

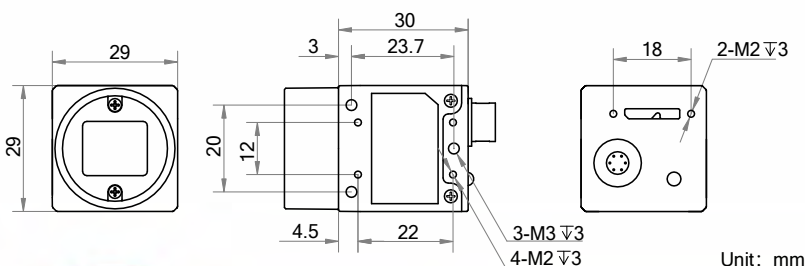
## Applicable Industry

Electronic semiconductor, factory automation, logistics code reading, liquor and beverage, medicine packing, etc.

## Sensor Quantum Efficiency



## Dimension



## Specification

Model	MV-CA013-21UM	MV-CA013-21UC
<b>Camera</b>		
Sensor type	CMOS, global shutter	
Sensor model	PYTHON1300	
Pixel size	4.8 μm × 4.8 μm	
Sensor size	1/2"	
Resolution	1280 × 1024	
Max. frame rate	210 fps @1280 × 1024	
Dynamic range	59.6 dB	
SNR	39.8 dB	
Gain	0 dB to 15 dB	
Exposure time	40 μs to 10 sec	65 μs to 10 sec
Exposure mode	Off/Once/Continuous exposure mode	
Mono/color	Mono	Color
Pixel format	Mono 8/10/10p/12/12p	Mono 8/10/12, Bayer RG 8/10/10p/12/12p, YUV422_YUYV_Packed, YUV 422 Packed, RGB8, BGR8
Binning	Supports 1 × 1, 1 × 2, 1 × 4, 2 × 1, 2 × 2, 2 × 4, 4 × 1, 4 × 2, 4 × 4	
Decimation	Supports 1 × 1, 2 × 2	
Reverse image	Supports horizontal and vertical reverse image output	
Image buffer	128 MB	
<b>Electrical feature</b>		
Data interface	USB3.0, compatible with USB2.0	
Digital I/O	6-pin Hirose connector provides power and I/O, including opto-isolated input × 1 (Line 0), opto-isolated output × 1 (Line 1), bi-directional non-isolated I/O × 1 (Line 2)	
Power supply	12 VDC, supports USB 3.0 power supply	
Power consumption	Typ. 3 W @5 VDC (USB3.0 provides power supply)	
<b>Mechanical</b>		
Lens mount	C-Mount	
Dimension	29 mm × 29 mm × 30 mm (1.1" × 1.1" × 1.2")	
Weight	Approx. 56 g (0.12 lb.)	
Ingress protection	IP30 (under correct lens installation and wiring)	
Temperature	Working temperature: 0 °C to 50 °C (32 °F to 122 °F) Storage temperature: -30 °C to 70 °C (-22 °F to 158 °F)	
Humidity	20% to 80% RH, non-condensing	
<b>General</b>		
Client software	MVS or third-party software compatible with USB3 Vision Protocol	
Operating system	32/64-bit Windows XP/7/10, 32/64-bit Linux and 64-bit MacOS	
Compatibility	USB 3.0 Vision, GenICam	
Certifications	CE, FCC, RoHS, KC	

**HIKROBOT**

Hangzhou Hikrobot Technology Co., Ltd.  
No.399 Danfeng Road, Binjiang District, Hangzhou 310051, China.  
en.hikrobotics.com

**MaxxVision®**

Sigmaringer Str. 121

70567 Stuttgart

Tel.: 0711 997 996 3

www.maxxvision.com

Copyright Hikrobot

Hangzhou Hikrobot Technology Co., Ltd. All Rights Reserved. Hangzhou Hikrobot Technology does not tolerate any infringement content. The data herein is based on Hikrobot's internal evaluation. Actual data may vary depending on specific configuration and operating condition. The information herein is subject to change without notice. All the content has been checked conscientiously. Nevertheless, Hikrobot shall not be liable to damages resulting from errors, inconsistencies or omissions.