

MV-CE020-10GC

2 MP 1/2.8" CMOS GigE Area Scan Camera



GEN*i*CAM

GIG*E* VISION

Introduction

MV-CE020-10GC camera adopts Sony® IMX290 sensor and GigE interface to provide high-quality image and non-compressed images in real time. Its max. frame rate reaches up to 58 fps in full resolution.

Key Feature

- Adopts GigE interface and max. transmission distance of 100 meters without relay.
- Supports auto and manual adjustment for exposure control, LUT, Gamma correction, etc.
- Up to 128 MB local memory for burst transmission.
- Supports hardware trigger, software trigger, etc.
- Compatible with GigE Vision V2.0 Protocol, GeniCam Standard, and third-party software based on the protocol and standard.

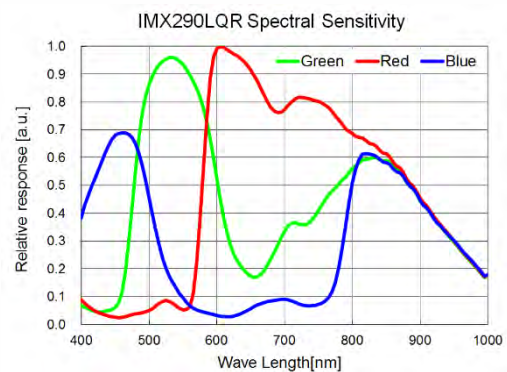
Available Model

Color camera: MV-CE020-10GC

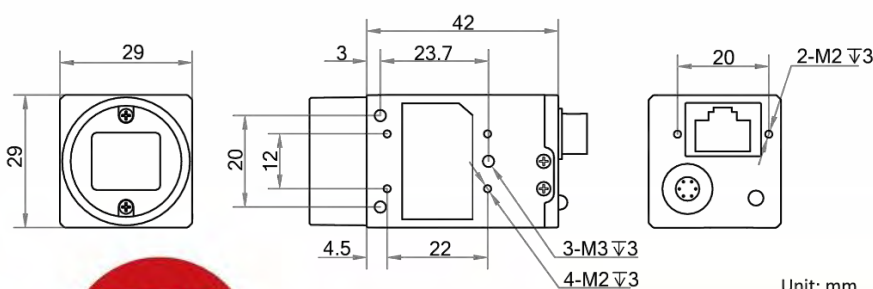
Applicable Industry

Electronic semiconductor, factory automation, food and beverage, medical packaging, etc.

Sensor Quantum Efficiency



Dimension



Specification

Model	MV-CE020-10GC
Camera	
Sensor type	Rolling shutter CMOS
Sensor model	Sony® IMX290
Pixel size	2.9 μm × 2.9 μm
Sensor size	1/2.8"
Resolution	1920 × 1080
Max. frame rate	58 fps @1920 × 1080
Dynamic range	74 dB
SNR	38 dB
Gain	0 dB to 20 dB
Exposure time	15 μs to 2 s
Shutter mode	Off/Once/Continuous exposure mode, supports global reset under trigger mode
Mono/color	Color
Pixel format	Mono 8/10/12, Bayer RG 8/10/10p/12/12p, YUV422Packed, YUV422_YUYV_Packed, RGB 8, BGR 8
Binning	Supports 2 × 2
Decimation	Supports 2 × 2
Reverse image	Supports horizontal and vertical reverse image output
Image buffer	128 MB
Electrical features	
Data interface	Gigabit Ethernet interface
Digital I/O	6-pin Hirose connector provides power and I/O, including opto-isolated input x 1 (Line 0), opto-isolated output x 1 (Line 1), and bi-directional non-isolated I/O x 1 (Line 2).
Power supply	9 VDC to 24 VDC, supports PoE
Power consumption	Approx. 2.4 W@12 VDC
Structure	
Lens mount	C-Mount
Dimension	29 mm × 29 mm × 42 mm (1.1" × 1.1" × 1.7")
Weight	Approx. 68 g (0.15 lb.)
Ingress protection	IP30 (under proper lens installation and wiring)
Temperature	Working temperature: 0 °C to 50 °C (32 °F to 122 °F) Storage temperature: -30 °C to 70 °C (-22 °F to 158 °F)
Humidity	20% to 80% RH, without condensation
General	
Client software	MVS or third-party software meeting with GigE Vision Protocol
Operating system	32/64-bit Windows XP/7/10, 32/64-bit Linux and 64-bit MacOS
Compatibility	GigE Vision V2.0, GenICam
Certification	CE, FCC, RoHS, KC

HIKROBOT

Hangzhou Hikrobot Technology Co., Ltd.
No.399 Danfeng Road, Binjiang District, Hangzhou 310051, China.
en.hikrobotics.com

MaxxVision®

Sigmaringer Str. 121
70567 Stuttgart
Tel.: 0711 997 996 3
www.maxxvision.com

Copyright Hikrobot

Hangzhou Hikrobot Technology Co., Ltd. All Rights Reserved. Hangzhou Hikrobot Technology does not tolerate any infringement. Any organization or individual may not imitate or reproduce in whole or in part of the content. The data herein is based on Hikrobot's internal evaluation. Actual data may vary depending on specific configuration and operating condition. The information herein is subject to change without notice. All the content has been checked conscientiously. Nevertheless, Hikrobot shall not be liable to damages resulting from errors, inconsistencies or omissions.