

MV-CA013-20GM/GC

1.3 MP 1/2" CMOS GigE Area Scan Camera



GEN*i*CAM

GigE
VISION

Introduction

MV-CA013-20GM/GC camera adopts OnSemi PYTHON1300 sensor to provide high-quality image. It uses GigE interface to transmit non-compressed images in real time with max. frame rate reaching 90 fps.

Key Feature

- Adopts GigE interface and max. transmission distance of 100 meters without relay
- Supports auto and manual adjustment for exposure control, LUT, Gamma correction, etc.
- Up to 128 MB local memory for burst transmission and retransmission
- Supports hardware trigger, software trigger, etc
- Compatible with GigE Vision Protocol V2.0, GenICam Standard, and third-party software based on protocol and standard

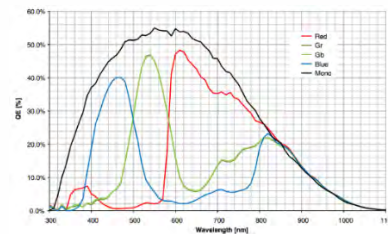
Available Model

Mono camera: MV-CA013-20GM
Color camera: MV-CA013-20GC

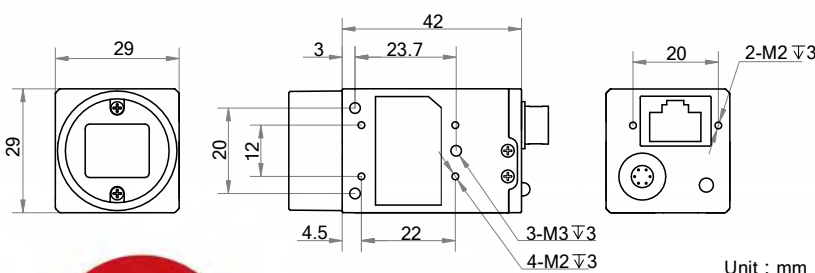
Applicable Industry

Electronic semiconductor, factory automation, food and beverage, medical packaging, etc.

Sensor Quantum Efficiency



Dimension



Unit : mm



Specification

Model	MV-CA013-20GM	MV-CA013-20GC
Camera		
Sensor type	CMOS, global shutter	
Sensor model	OnSemi PYTHON1300	
Pixel size	4.8 μm x 4.8 μm	
Sensor size	1/2"	
Resolution	1280 × 1024	
Max. frame rate	90 fps @1280 × 1024	
Dynamic range	59.6 dB	
SNR	39.8 dB	
Gain	0 dB to 15 dB	
Exposure time	38 μs to 10 s	62 μs to 10 s
Shutter mode	Off/Once/Continuous exposure mode	
Mono/color	Mono	Color
Pixel format	Mono 8/10/10p/12/12p	Mono 8/10/12, Bayer RG 8/10/10p/12/12p, YUV422Packed, YUV422_YUYV_Packed, RGB 8
Binning	Supports 1 x 2, 1 x 4, 2 x 1, 2 x 2, 2 x 4, 4 x 1, 4 x 2, 4 x 4	
Decimation	Supports 2 x 2	
Reverse image	Supports horizontal and vertical reverse image output	
Image buffer	128 MB	
Electrical features		
Data interface	Gigabit Ethernet	
Digital I/O	6-pin Hirose connector provides power and I/O, including opto-isolated input x 1 (Line0), opto-isolated output x 1 (Line1), and bi-directional non-isolated I/O x 1 (Line2)	
Power supply	5 VDC to 15 VDC, supports PoE power supply	
Power consumption	Approx. 2.7 W@12 VDC	
Structure		
Lens mount	C-Mount	
Dimension	29 mm × 29 mm × 42 mm (1.1" × 1.1" × 1.7")	
Weight	Approx. 68 g (0.15 lb.)	
Ingress protection	IP30 (under proper lens installation and wiring)	
Temperature	Working temperature: 0 °C to 50 °C (32 °F to 122 °F) Storage temperature: -30 °C to 70 °C (-22 °F to 158 °F)	
Humidity	20% to 80% RH, without condensation	
General		
Client software	MVS or third-party software meeting with GigE Vision Protocol	
Operation system	32/64-bit Windows XP/7/10 and 32/64-bit Linux	
Compatibility	GigE Vision V2.0, GenICam	
Certifications	CE, FCC, RoHS, KC	

HIKROBOT

Hangzhou Hikrobot Technology Co., Ltd.
No.399 Danfeng Road, Binjiang District, Hangzhou 310051, China.
en.hikrobotics.com

MaxxVision®

Sigmaringer Str. 121
70567 Stuttgart
Tel.: 0711 997 996 3
www.maxxvision.com

Copyright Hikrobot

Hangzhou Hikrobot Technology Co., Ltd. All Rights Reserved. Hangzhou Hikrobot Technology does not tolerate any infringement. Any organization or individual may not imitate or reproduce in whole or in part of the content. The data herein is based on Hikrobot's internal evaluation. Actual data may vary depending on specific configuration and operating condition. The information herein is subject to change without notice. All the content has been checked conscientiously. Nevertheless, Hikrobot shall not be liable to damages resulting from errors, inconsistencies or omissions.