

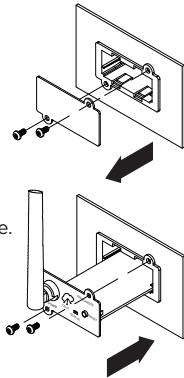
## REMOTE WIRELESS CLOUD CARD RWCCARD100

### Quick Start Guide

#### INSTALLATION GUIDE

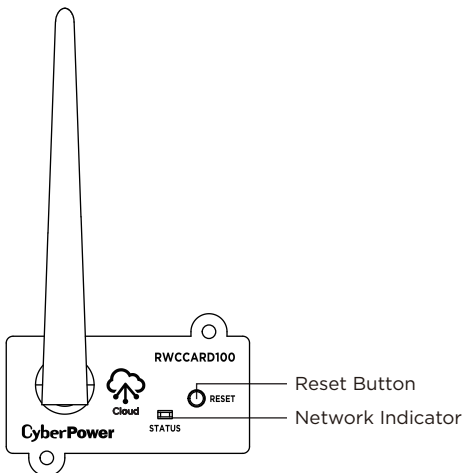
##### Step 1. Hardware Installation

1. Remove the two retaining screws from the expansion slot, and remove the cover.
2. Install the Remote Wireless Cloud Card into the expansion slot.
3. Insert and tighten the retaining screws.
4. Please ensure the LED Status is flashing blue.



**NOTE:** You can reset the Remote Wireless Cloud Card back to its factory settings by pressing and holding the Reset button. It will begin to flash blue once it's reset.

**NOTE:** The Remote Wireless Cloud Card is hot-swappable, so you do not need to turn off the device to install it.



1

#### Definitions for the LED Indicators

LED Status (Color)	Condition
Blue (Flashing)	The Remote Wireless Cloud Card is not connected to the Router.
Green (Flashing)	The Remote Wireless Cloud Card is being connected to the Network.
Green	The Remote Wireless Cloud Card is connected to the Network.

#### Step 2. Application Installation

Install the "POWERPANEL" application available for download on the Apple App Store or Google Play, then launch the application.



#### Step 3. Sign Up and Login, as shown in Figure 1

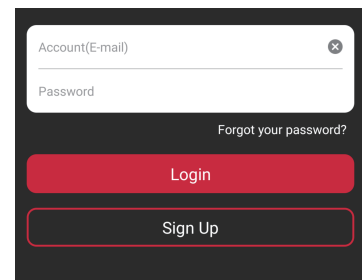


Figure 1

2

#### Step 4. Add a device in the POWERPANEL app

1. Click "+" in the upper right corner of the homepage, as shown in Figure 2.

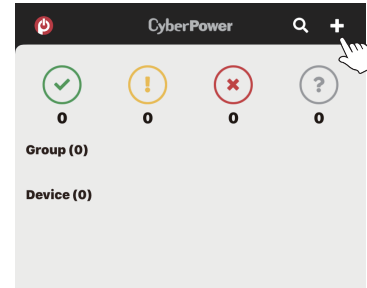
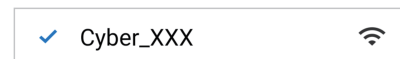


Figure 2

2. Select "Add Device by WiFi" to add your Remote Wireless Cloud Card.

3. Connect the Remote Wireless Cloud Card you are installing.

- Go to your phone's Settings > Wi-Fi
- Make sure the Wi-Fi is turned on, and choose the network, like the example below, to connect to the wireless card
- Enter the default password: cyberpower



- Once connected, return to the application

**NOTE:** If you were not prompted to turn on your phone's location, verify it's on now.

4. If the Remote Wireless Cloud Card is connected, then you will see "Setting WiFi" on the bottom of the page.

5. Select and connect to your Wi-Fi router and name the device you are monitoring.

3

6. After the setup is completed, you will see your device on the homepage, as shown in Figure 3.

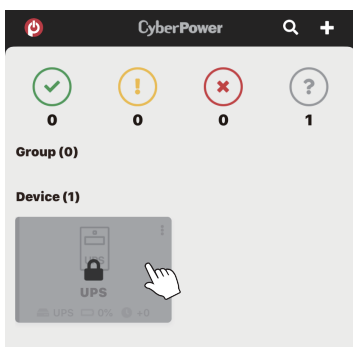


Figure 3

7. Wait till successful configuration, as shown in Figure 4.

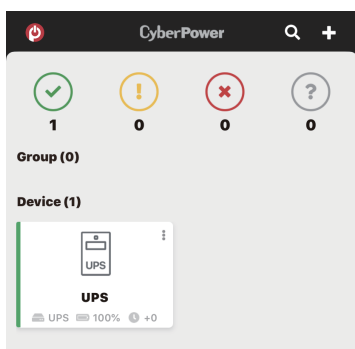


Figure 4

### Step 5. Start monitoring your UPS!

In addition to the app, you can access the PowerPanel® Cloud account via a web browser: <https://powerpanel.cyberpower.com>

For more information, please refer to the PowerPanel® Cloud User's Manual.

4

## FIRMWARE UPGRADE

Keep your RWCCARD100 up to date with the newest features and improvements. Ensure your RWCCARD100 has the latest version of firmware by selecting access "Device Setting" / "Card Firmware Update" in the PowerPanel® App or the PowerPanel® Cloud web browser periodically to check for updates, as shown in Figure 5 and 6.

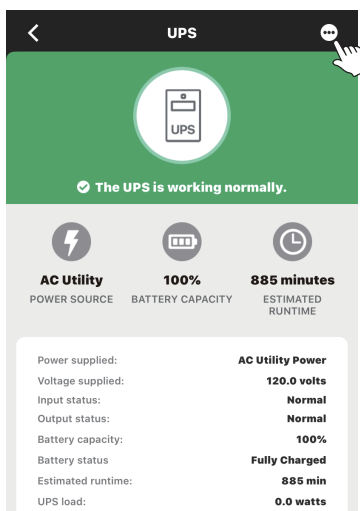


Figure 5

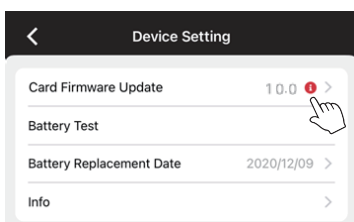


Figure 6

5

## CONFORMANCE APPROVALS

### FCC Statement:

This device complies with part 15 of the FCC Rules. Operation is subject to the following two conditions:

- (1) This device may not cause harmful interference, and
- (2) this device must accept any interference received, including interference that may cause undesired operation.

**NOTE:** This equipment has been tested and found to comply with the limits for a Class B digital device, pursuant to part 15 of the FCC Rules. These limits are designed to provide reasonable protection against harmful interference in a residential installation. This equipment generates, uses and can radiate radio frequency energy and, if not installed and used in accordance with the instructions, may cause harmful interference to radio communications. However, there is no guarantee that interference will not occur in a particular installation.

If this equipment does cause harmful interference to radio or television reception, which can be determined by turning the equipment off and on, the user is encouraged to try to correct the interference by one or more of the following measures:

- Reorient or relocate the receiving antenna.
- Increase the separation between the equipment and receiver.
- Connect the equipment into an outlet on a circuit different from that to which the receiver is connected.
- Consult the dealer or an experienced radio/TV technician for help.

Changes or modifications not expressly approved by the party responsible for compliance could void the user's authority to operate the equipment.

This device contains licence-exempt transmitter(s) that comply with Innovation, Science and Economic Development Canada's licence-exempt RSS(s). Operation is subject to the following two conditions:

- (1) this device may not cause interference,
- (2) this device must accept any interference, including interference that may cause undesired operation of the device.

L'émetteur exempt de licence contenu dans le présent appareil est conforme aux CNR d'Innovation, Sciences et Développement économique Canada applicables aux appareils radio exempts de licence. L'exploitation est autorisée aux deux conditions suivantes :

- (1) L'appareil ne doit pas produire de brouillage;
- (2) L'appareil doit accepter tout brouillage radioélectrique subi, même si le brouillage est susceptible d'en compromettre le fonctionnement.

### Canadian Compliance Statement

CAN ICES-3 (B)/NMB-3(B)



### Disposal

The Waste Electrical and Electronic Equipment (WEEE) Directive aims to contribute to sustainable production and consumption by contributing to the efficient use of resources and the retrieval of secondary raw materials through re-use, recycling and other forms of recovery. The symbol on this product and/or its packaging indicates that the product must be disposed of separately from ordinary household wastes at its end of life. Contact your related WEEE management authority, local office, or your household waste disposal service about information on the recycling drop off site.

6

# CyberPower

[www.cyberpower.com](http://www.cyberpower.com)

Europe, Northern Ireland

**Cyber Power Systems B.V.**

Flight Forum 3545, 5657DW Eindhoven, The Netherlands

Tel: +31 40 2348170 | Fax: +31 40 2340314

Email: [eu.service@cyberpower.com](mailto:eu.service@cyberpower.com)

Austria, Germany, Switzerland

**Cyber Power Systems GmbH**

Edisonstrasse 16, 85716 Unterschleissheim, Germany

Telefon: +49 89 1 222 166 0 | Fax: +49 89 1 222 166 29

Email: [de.service@cyberpower.com](mailto:de.service@cyberpower.com)

France

**Nitram S.A.**

Z.I. Saint-Séverin, B.P. 36, 28220 CLOYES, FRANCE

Tél : +33 2 37 98 61 50 | Fax: +33 2 37 98 60 04

E-mail: [infos@nitram.fr](mailto:infos@nitram.fr)

United States, Canada

**Cyber Power Systems (USA), Inc.**

4241 12th Avenue East, Suite 400, Shakopee, MN 55379

Toll-free: +1 877 297 6937

Email: [sales@cpsww.com](mailto:sales@cpsww.com)

Taiwan, United Kingdom

**Cyber Power Systems, Inc.**

11F., No.26, Jinzhuang Rd., Neihu Dist., Taipei City 114, Taiwan

Tel: +886 2 8792 9510 | Fax: +886 2 8792 9621

Email: [tw.service@cyberpower.com](mailto:tw.service@cyberpower.com), [uk.service@cyberpower.com](mailto:uk.service@cyberpower.com)

All Other Regions

Please visit our website for local contact information.

