

MV-CE200-10GM/GC

20 MP 1" CMOS GigE Area Scan Camera



GEN*i*CAM

GIG*E* VISION

Introduction

MV-CE200-10GM/GC camera adopts Sony IMX183 sensor to provide high-quality image. It uses GigE interface to transmit non-compressed images in real time with max. frame rate reaching 6 fps.

Key Feature

- Adopts GigE interface and max. transmission distance of 100 meters without relay
- Up to 128 MB local memory for burst transmission and retransmission
- Supports auto exposure control, LUT, Gamma correction, etc.
- Supports hardware trigger, software trigger, etc.
- Compatible with GigE Vision Protocol V2.0, GenICam Standard, and third-party software based on these protocol and standard

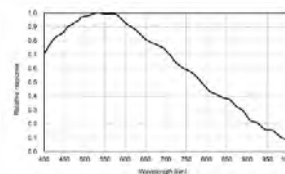
Available Model

Mono camera: MV-CE200-10GM
Color camera: MV-CE200-10GC

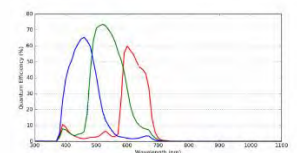
Applicable Industry

Electronic semiconductor, factory automation, logistic code reading, medical packaging, etc.

Sensor Quantum Efficiency

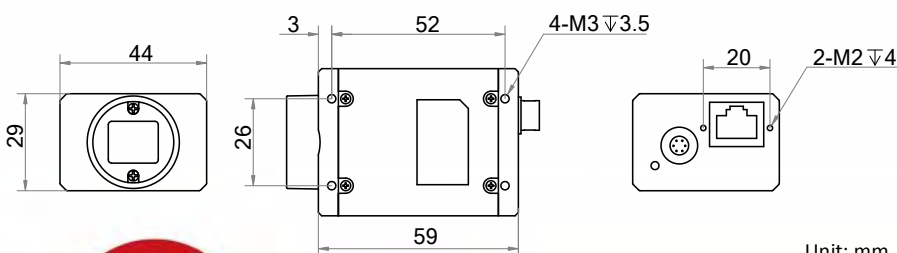


MV-CE200-10GM



MV-CE200-10GC

Dimension



Unit: mm



Specification

Model	MV-CE200-10GM	MV-CE200-10GC
Camera		
Sensor type	CMOS, rolling shutter	
Sensor model	Sony IMX183	
Pixel size	2.4 μm \times 2.4 μm	
Sensor size	1"	
Resolution	5472 \times 3648	
Max. frame rate	6 fps @5472 \times 3648	
Dynamic range	65.5 dB	
SNR	41.5 dB	
Gain	0 dB to 20 dB	
Exposure time	46 μs to 2 s	
Shutter mode	Off/Once/Continuous exposure mode, supports Global Reset	
Mono/color	Mono	Color
Pixel format	Mono 8/10/10p/12/12p	Mono 8/10/12, Bayer GB 8/10/10p/12/12p, YUV422Packed, YUV422_YUYV_Packed, RGB 8, BGR 8
Binning	Supports 2 \times 2, 4 \times 4	
Reverse image	Supports horizontal reverse image output	
Image buffer	128 MB	
Electrical features		
Data interface	Gigabit Ethernet	
Digital I/O	6-pin Hirose connector provides power and I/O, including opto-isolated input x 1 (Line0), opto-isolated output x 1(Line1), bi-directional non-isolated I/O x 1 (Line2)	
Power supply	5 VDC to 15 VDC, supports PoE power supply	
Power consumption	Approx. 3.1 W@12 VDC	Approx. 3.2 W@12 VDC
Structure		
Lens mount	C-Mount	
Dimension	44 mm \times 29 mm \times 59 mm (1.7" \times 1.1" \times 2.3")	
Weight	< 100 g (0.22 lb.)	
Ingress protection	IP30 (under proper lens installation and wiring)	
Temperature	Working temperature: 0 $^{\circ}\text{C}$ to 50 $^{\circ}\text{C}$ (32 $^{\circ}\text{F}$ to 122 $^{\circ}\text{F}$) Storage temperature: -30 $^{\circ}\text{C}$ to 70 $^{\circ}\text{C}$ (-22 $^{\circ}\text{F}$ to 158 $^{\circ}\text{F}$)	
Humidity	20% to 80% RH, without condensation	
General		
Client software	MVS or third-party software meeting with GigE Vision Protocol	
Operating system	32/64-bit Windows XP/7/10 and 32/64-bit Linux	
Compatibility	GigE Vision V2.0, GenICam	
Certification	CE, FCC, RoHS, KC	

HIKROBOT

Hangzhou Hikrobot Technology Co., Ltd.
No.399 Danfeng Road, Binjiang District, Hangzhou 310051, China.
en.hikrobotics.com

MaxxVision®

Sigmaringer Str. 121
70567 Stuttgart
Tel.: 0711 997 996 3
www.maxxvision.com

Copyright Hikrobot

Hangzhou Hikrobot Technology Co., Ltd. All Rights Reserved. Hangzhou Hikrobot Technology does not tolerate any infringement. Any organization or individual may not imitate or reproduce in whole or in part of the content. The data herein is based on Hikrobot's internal evaluation. Actual data may vary depending on specific configuration and operating condition. The information herein is subject to change without notice. All the content has been checked conscientiously. Nevertheless, Hikrobot shall not be liable to damages resulting from errors, inconsistencies or omissions.