

# MV-CE100-30GM/GC

10 MP 1/2.3" CMOS GigE Area Scan Camera



GEN*i*CAM

GIG*E* VISION

## Introduction

MV-CE100-30GM/GC camera is a high quality device that can be used in a variety of applications, including electronic semiconductor fabrication, factory automation, quality inspection.

## Key Feature

- Adopts GigE interface and max. transmission distance of 100 meters without relay
- Up to 128 MB local memory for burst transmission and retransmission
- Supports auto exposure control, LUT, Gamma correction, etc.
- Supports hardware trigger, software trigger, etc.
- Compatible with GigE Vision V1.2 Protocol, GenICam Standard, and third-party software based on the protocol and standard

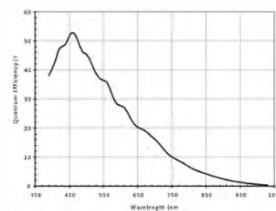
## Available Model

Mono camera: MV-CE100-30GM  
Color camera: MV-CE100-30GC

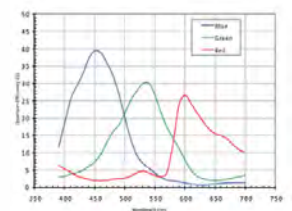
## Applicable Industry

Electronic semiconductor, factory automation, quality inspection, etc.

## Sensor Quantum Efficiency

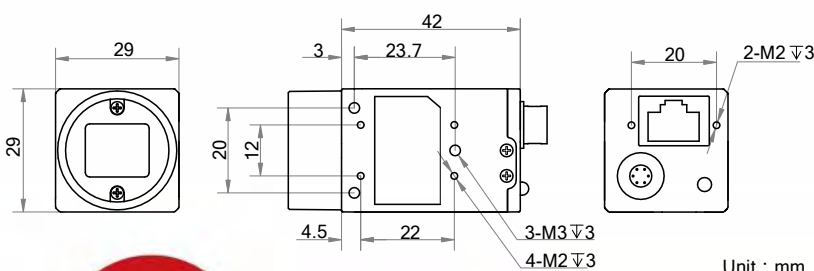


MV-CE100-30GM



MV-CE100-30GC

## Dimension



Unit : mm



## Specification

Model	MV-CE100-30GM	MV-CE100-30GC
<b>Camera</b>		
Sensor type	CMOS, rolling shutter	
Sensor model	MT9J003	
Pixel size	1.67 $\mu\text{m}$ $\times$ 1.67 $\mu\text{m}$	
Sensor size	1/2.3"	
Resolution	3840 $\times$ 2748	
Max. frame rate	7 fps @3840 $\times$ 2748	
Dynamic range	65 dB	
SNR	34 dB	
Gain	0 dB to 15.3 dB	
Exposure time	50 $\mu\text{s}$ to 2 s	
Shutter mode	Off/Once/Continuous exposure mode	
Mono/color	Mono	Color
Pixel format	Mono 8/10/10p/12/12p	Mono 8/10/12, RGB8, Bayer GR 8/10/10p/12/12p, YUV 422 8 UYVY, YUV 422 8
Binning	Supports 2 $\times$ 2	
Decimation	Not support	
Reverse image	Supports horizontal reverse image output	
Image buffer	128 MB	
<b>Electrical features</b>		
Data interface	Gigabit Ethernet	
Digital I/O	Opto-isolated input x 1, opto-isolated output x 1, and bi-directional non-isolated I/O x 1	
Power supply	5 VDC to 15 VDC, supports PoE power supply	
Power consumption	Approx. 2.6 W@12 VDC	
<b>Structure</b>		
Lens mount	C-Mount	
Dimension	29 mm $\times$ 29 mm $\times$ 42 mm (1.1" $\times$ 1.1" $\times$ 1.7")	
Weight	Approx. 68 g (0.15 lb.)	
Ingress protection	IP30 (under proper lens installation and wiring)	
Temperature	Working temperature: 0 $^{\circ}\text{C}$ to 50 $^{\circ}\text{C}$ (32 $^{\circ}\text{F}$ to 122 $^{\circ}\text{F}$ ) Storage temperature: -30 $^{\circ}\text{C}$ to 70 $^{\circ}\text{C}$ (-22 $^{\circ}\text{F}$ to 158 $^{\circ}\text{F}$ )	
Humidity	20% to 80% RH, without condensation	
<b>General</b>		
Client software	MVS or third-party software meeting with GigE Vision Protocol	
Operating system	32/64-bit Windows XP/7/10, 32/64-bit Linux and 64-bit MacOS	
Compatibility	GigE Vision	
Certification	CE, FCC, RoHS, KC	

### HIKROBOT

Hangzhou Hikrobot Technology Co., Ltd.  
No.399 Danfeng Road, Binjiang District, Hangzhou 310051, China.  
en.hikrobotics.com

### MaxxVision®

Sigmaringer Str. 121  
70567 Stuttgart  
Tel.: 0711 997 996 3  
www.maxxvision.com

Copyright Hikrobot

Hangzhou Hikrobot Technology Co., Ltd. All Rights Reserved. Hangzhou Hikrobot Technology does not tolerate any infringement. Any organization or individual may not imitate or reproduce in whole or in part of the content. The data herein is based on Hikrobot's internal evaluation. Actual data may vary depending on specific configuration and operating condition. The information herein is subject to change without notice. All the content has been checked conscientiously. Nevertheless, Hikrobot shall not be liable to damages resulting from errors, inconsistencies or omissions.