

MV-CA020-10GM/GC

2 MP 1/1.7" CMOS GigE Area Scan Camera



GEN*ic*AM

GIG*E*
VISION

Introduction

MV-CA020-10GM/GC camera adopts Sony® IMX430 sensor to provide high-quality image. It uses GigE interface to transmit non-compressed images in real time with max. frame rate reaching 60 fps in full resolution.

Key Feature

- Adopts GigE interface and max. transmission distance of 100 meters without relay
- Supports auto and manual adjustment for exposure control, LUT, Gamma correction, etc.
- Up to 128 MB local memory for burst transmission and retransmission
- Supports hardware trigger, software trigger, etc.
- Compatible with GigE Vision Protocol V2.0, GenICam Standard, and third-party software based on these protocol and standard

Available Model

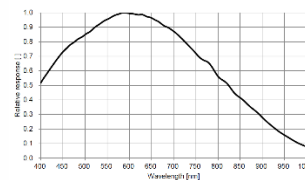
Mono camera: MV-CA020-10GM
Color camera: MV-CA020-10GC

Applicable Industry

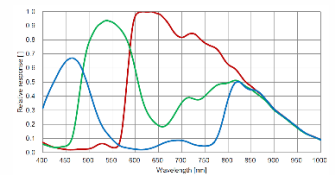
Electronic semiconductor, factory automation, logistics code reading, medical packing, quality inspection, etc.

Sensor Quantum Efficiency

(Excludes lens characteristics and light source characteristics)

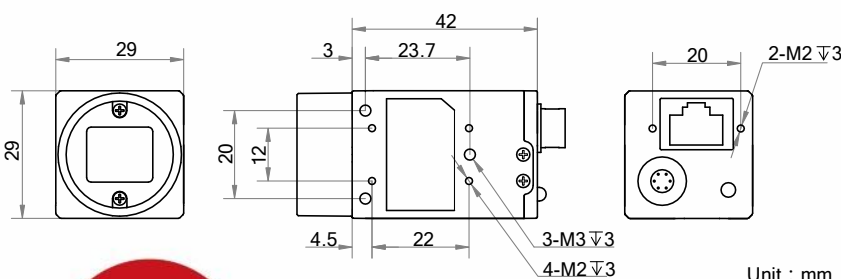


MV-CA020-10GM



MV-CA020-10GC

Dimension



Unit : mm



Specification

Model	MV-CA020-10GM	MV-CA020-10GC
Camera		
Sensor type	CMOS, global shutter	
Sensor model	Sony® IMX430	
Pixel size	4.5 μm × 4.5 μm	
Sensor size	1/1.7"	
Resolution	1624 × 1240	
Max. frame rate	60 fps @1624 × 1240	
Dynamic range	72.08 dB	
SNR	43.8 dB	
Gain	0 dB to 24 dB	
Exposure time	1 μs to 10 s	
Shutter mode	Off/Once/Continuous exposure mode	
Mono/color	Mono	Color
Pixel format	Mono 8/10/10p/12/12p	Mono 8/10/12, RGB 8, BGR 8, Bayer GB 8/10/10p/12/12p, YUV422Packed, YUV422_YUYV_Packed
Binning	Supports 2 × 2	
Decimation	Supports 2 × 2	
Reverse image	Supports horizontal and vertical reverse image output	
Image buffer	128 MB	
Electrical features		
Data interface	Gigabit Ethernet	
Digital I/O	6-pin Hirose connector provides power and I/O, including Opto-isolated input x 1 (Line 0), opto-isolated output x 1 (Line 1), and bi-directional non-isolated I/O x 1 (Line 2).	
Power supply	9 VDC to 24 VDC, supports PoE	
Power consumption	< 3.27 W@12 VDC	< 3.6 W@12 VDC
Structure		
Lens mount	C-Mount	
Dimension	29 mm × 29 mm × 42 mm (1.1" × 1.1" × 1.7")	
Weight	Approx. 68 g (0.15 lb.)	
Ingress protection	IP30 (under proper lens installation and wiring)	
Temperature	Working temperature: 0 °C to 50 °C (32 °F to 122 °F) Storage temperature: -30 °C to 70 °C (-22 °F to 158 °F)	
Humidity	20% to 80% RH, without condensation	
General		
Client software	MVS or third-party software meeting with GigE Vision Protocol	
Operating system	32/64-bit Windows XP/7/10, 32/64-bit Linux and 64-bit MacOS	
Compatibility	GigE Vision V2.0, GenICam	
Certification	CE, FCC, RoHS, KC	

HIKROBOT

Hangzhou Hikrobot Technology Co., Ltd.

No.399 Danfeng Road, Binjiang District, Hangzhou 310051, China.

en.hikrobotics.com

Copyright Hikrobot

Hangzhou Hikrobot Technology Co., Ltd. All Rights Reserved. Hangzhou Hikrobot Technology does not tolerate any infringement. Any organization or individual may not imitate or reproduce in whole or in part of the content. The data herein is based on Hikrobot's internal evaluation. Actual data may vary depending on specific configuration and operating condition. The information herein is subject to change without notice. All the content has been checked conscientiously. Nevertheless, Hikrobot shall not be liable to damages resulting from errors, inconsistencies or omissions.