

# MV-CA020-20GM/GC

2 MP 2/3" CMOS GigE Area Scan Camera

GEN*i*CAM

GIG*E* VISION



## Introduction

MV-CA020-20GM/GC adopts PYTHON2000 CMOS sensor to provide high quality image. The GigE interface provides high-speed real-time transmission of uncompressed data with the maximum frame rate reaching 51 fps at full resolution.

## Key Feature

- Adopts GigE interface and max. transmission distance of 100 meters without relay
- Supports auto and manual adjustment for exposure control, LUT, Gamma correction, etc.
- Up to 128 MB local memory for burst transmission and retransmission
- Supports hardware trigger, software trigger, etc.
- Compatible with GigE Vision Protocol V1.2, GenICam Standard, and third-party software based on these protocol and standard

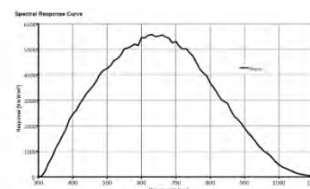
## Available Model

Mono camera: MV-CA020-20GM  
Color camera: MV-CA020-20GC

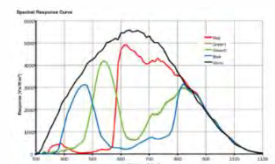
## Applicable Industry

Electronic semiconductor, factory automation, quality inspection, etc.

## Sensor Quantum Efficiency

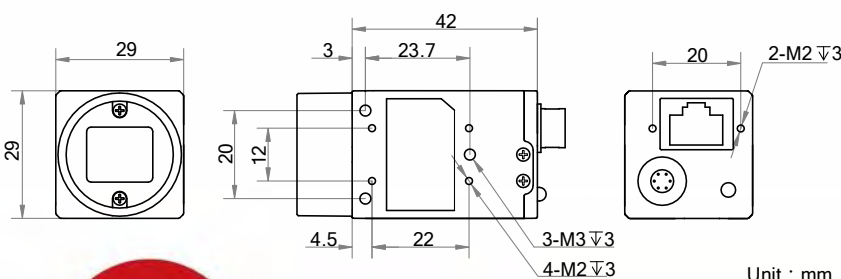


MV-CA020-20GM



MV-CA020-20GC

## Dimension



Unit : mm



## Specification

Model	MV-CA020-20GM	MV-CA020-20GC
<b>Camera</b>		
Sensor type	CMOS, global shutter	
Sensor model	PYTHON2000	
Pixel size	4.8 μm x 4.8 μm	
Sensor size	2/3"	
Resolution	1920 × 1200	
Max. frame rate	51 fps @1920 × 1200	
Dynamic range	57.9 dB	
SNR	39.5 dB	
Gain	0 dB to 15 dB	
Exposure time	59 μs to 10 s	
Shutter mode	Off/Once/Continuous exposure mode	
Mono/color	Mono	Color
Pixel format	Mono 8/10/10p/12/12p	Mono 8/10/12, Bayer RG 8/10/10p/12/12p, YUV 422 Packed, YUV422_YUYV_Packed, RGB8
Reverse image	Supports horizontal and vertical reverse image output	
Image buffer	128 MB	
<b>Electrical features</b>		
Data interface	Gigabit Ethernet	
Digital I/O	Opto-isolated input x 1, Opto-isolated output x 1, Bi-directional non-isolated I/O x 1	
Power supply	5 VDC to 15 VDC, supports PoE power supply	
Power consumption	< 2.9 W@12 VDC	
<b>Structure</b>		
Lens mount	C-Mount	
Dimension	29 mm × 29 mm × 42 mm (1.1" × 1.1" × 1.7")	
Weight	< 68 g (0.15 lb.)	
Ingress protection	IP30 ( only when lens is correctly mounted and cables are correctly connected)	
Temperature	Working temperature: 0 °C to 50 °C (32 °F to 122 °F) Storage temperature: -30 °C to 70 °C (-22 °F to 158 °F)	
Humidity	20% to 80% RH, without condensation	
<b>General</b>		
Client software	MVS or third-party software meeting with GigE Vision Protocol	
Operation system	32/64-bit Windows XP/7/10, 32/64-bit Linux and 64-bit MacOS	
Compatibility	GigE Vision	
Certifications	CE, FCC, RoHS, KC	

**HIKROBOT**

Hangzhou Hikrobot Technology Co., Ltd.  
No.399 Danfeng Road, Binjiang District, Hangzhou 310051, China.  
en.hikrobotics.com

**MaxxVision®**

Sigmaringer Str. 121  
70567 Stuttgart  
Tel.: 0711 997 996 3  
www.maxxvision.com

Copyright Hikrobot

Hangzhou Hikrobot Technology Co., Ltd. All Rights Reserved. Hangzhou Hikrobot Technology does not tolerate any infringement. Any organization or individual may not imitate or reproduce in whole or in part of the content. The data herein is based on Hikrobot's internal evaluation. Actual data may vary depending on specific configuration and operating condition. The information herein is subject to change without notice. All the content has been checked conscientiously. Nevertheless, Hikrobot shall not be liable to damages resulting from errors, inconsistencies or omissions.